



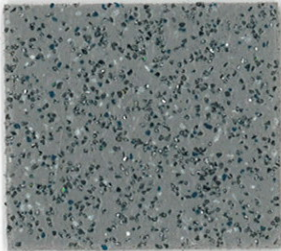
altro

# Altro Walkway™ 20 / Altro Walkway™ 20 SD

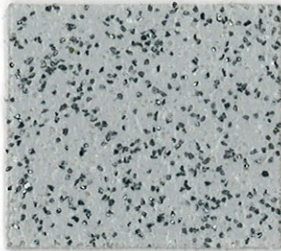
CI/SfB reference  
(43) T (U47)

May 2008

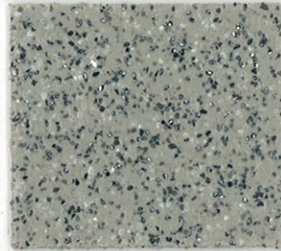
## Safety flooring - Now with 10 year warranty



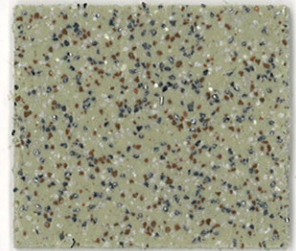
Fog VM20153\*  
WR81 / A1M81



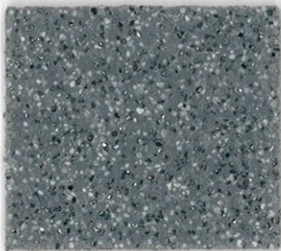
Cloud VM2014  
WR79 / A1M191



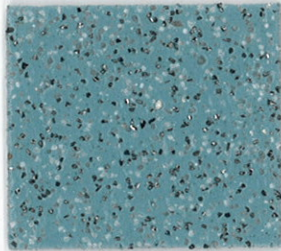
Avocado VM20924  
WR137 / A1M137



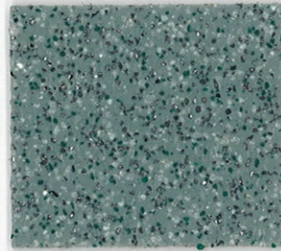
Bone VM20215\*  
WR20 / A1M20



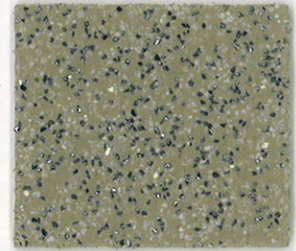
Dolphin VM2010  
WR86 / A1M86



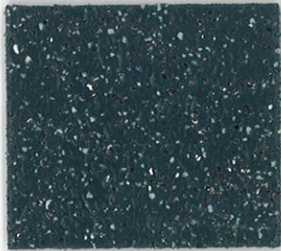
Waterfall VM20912  
WR155 / A1M135



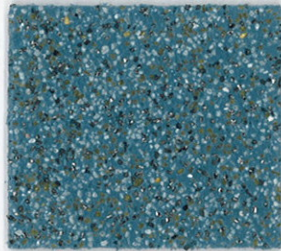
Skyline VM20332\*  
WR52 / A1M52



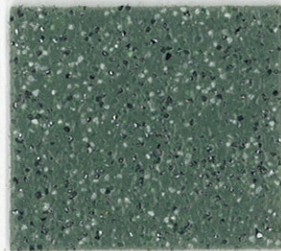
Biscuit VM20907  
WR146 / A1M20



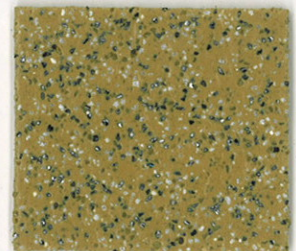
Midnight VM20421  
WR72 / A1M72



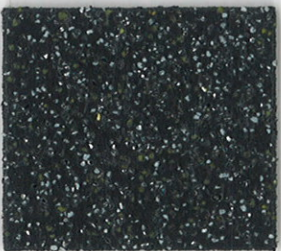
Blue VM20412\*  
WR71 / A1M71



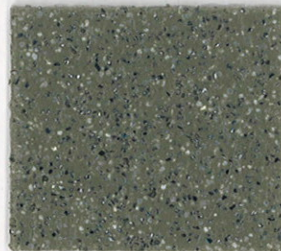
Pesto VM20921  
WR242 / A1M242



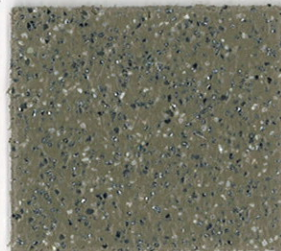
Maize VM20908  
WR152 / A1M152



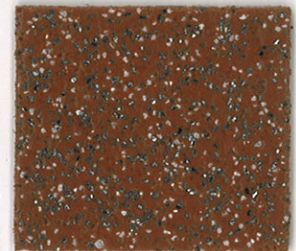
Black VM20892  
WR100 / A1M100



Tundra VM20910  
WR153 / A1M239



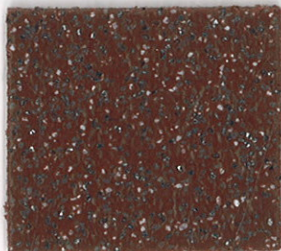
Buffalo VM20925  
WR63 / A1M239



Terracotta VM20922  
WR157 / A1M42



Kelp VM20923  
WR89 / A1M89



Cherry VM20920  
WR148 / A1M148



- All Altro manufactured safety flooring contains post consumer recycle as an integral raw material
- All Altro safety flooring is 100% recyclable

- Altro is the leader in safety flooring recycling
- Contains at least 10% recycled content

explore [www.altro.com](http://www.altro.com)

N.B. Exact material match with samples cannot be guaranteed. \*Indicates static dissipative grades available. For codes use standard product code followed by 'SD'. Due to the addition of static dissipative properties, Altro Walkway 20 SD does not have exactly the same appearance as that shown above. WR = Weld Rod code A1M = Altro Mastic code.

# Altro Walkway™ 20 / Altro Walkway™ 20 SD

Typically used in circulation areas, small kitchens, bathrooms, changing rooms, food serveries, classrooms, and shops. Altro Walkway 20 SD offers static dissipation for locations prone to dangerous static build up.

## Standards and Accreditation

Meets and exceeds the requirements of BS EN 13845.

## Slip Resistance

Greater than or equal to 36; low risk of slipping (UK Slip Resistance Guidelines); DIN 51130, R10. The construction of Altro safety flooring ensures that its slip resistance is maintained throughout the life of the product.\*

## Specification

Format	Roll	
Dimensions	20m x 2m	(EN426)
Thickness	2.0mm	(EN428)
Weight	2.4kg/m <sup>2</sup>	(EN430)

## Performance

Indentation	<0.1mm	(EN433)
Dimensional stability	<0.4%	(EN434)
Flexibility	PASS 20mm mandrel	(EN435)
Colour fastness	>6	(EN 20105 BO2: Method 3)
Fire performance	Class 1	(BS476: Part 7 1997)
	Class B <sub>fl</sub> s1	(EN13501-1)
	±8kW/m	(EN ISO 9239-1)
	Pass	(EN ISO 11925-2)
Abrasion wear Classification	Group T Homogenous Classes 34 & 43	(EN660-2) (EN685)
Sound absorption	5dB	(ISO 140-8)
Electrical resistance	2x10 <sup>9</sup> Ohms	(EN1081)
	0.2kV	(EN1815)

## Warranties

Warranty 10 years - **new extended** (subject to conditions on warranty form).  
Life expectancy 15+ years (under many traffic conditions, wear is comparable to epoxy and quarry tiles).

## Chemicals

Resists Common dilute acids, alkalis and many organic solvents  
Ketone solvents

### Caution

Chemical spillages should be removed immediately to protect the floor. For areas liable to chemical spillages, please contact Altro for technical advice.

N.B. More information on performance and standards is available in Altro Flooring and Walling brochures or on [www.altro.com](http://www.altro.com)

## Staining and Protection

Certain chemicals may cause staining of vinyl. Traffic stain can be caused by oil residue, certain cleaning agents, asphalt and anti-oxidants in some types of rubber. Chairs and stools should be fitted with quality plastic feet to avoid damage to the floor. For further information or advice, please contact Altro.

## Colour Choice

The colour of Altro safety flooring should be carefully chosen with expected traffic conditions in mind and protective measures such as the use of barrier matting, should be taken wherever possible.

## Biological

Excellent surface antibacterial activity due to bacteriostat incorporation\*\*.

## Materials of Composition

Matrix	High-quality vinyl
Inclusions	Aluminium oxide granules - throughout; Silicon carbide and coloured quartz - surface layer
Backing	Non-woven polyester/cellulose, glass fibre reinforcement
Wear layer	2mm

## Recommended Cleaning Methods

Machine or hand scrubbing and AltroClean 44™ or other Altro approved cleaners. Technical advances to Altro safety floors significantly improve their cleaning characteristics. Refer to Altro safety flooring routine maintenance instructions for comprehensive cleaning advice and chemicals on [www.altro.com](http://www.altro.com) or contact 01462 707600.

N.B. Where maximum slip resistance is not required, AltroGloss™ 211, may be applied (entirely on building owner's responsibility for Health & Safety assessment). Do not use AltroGloss 211 on Altro Walkway 20 SD.

## Installation and Maintenance

All installations in accordance with Code of Practice BS 8203:2001, and Altro safety flooring installation instructions.

Joints	All hot welded
Subfloor	As Code of Practice, with effective DPM where necessary
Adhesives	As recommended in Altro safety flooring installation instructions, the Altro price list or at <a href="http://www.altro.com">www.altro.com</a>

N.B. Failure to install and maintain Altro floors in accordance with 'Altro safety flooring installation instructions' can affect its performance and slip resistance. Floors should be protected from other trades and thoroughly cleaned before handover.

## Altro Flooring and Walling Ranges

Products include safety flooring, smooth flooring, resin systems, Mondo rubber, sports flooring, hygienic wall coatings, hygienic PVCu walling and ceiling systems, hygienic doorsets, decorative wall coatings and protective wall coatings. For more information ask for the Altro Flooring and Walling brochures appropriate to your industry sector, or visit [www.altro.com](http://www.altro.com)

## Sample Specification

The slip-resistant vinyl sheet flooring to be Altro safety flooring Walkway 20 or Walkway 20 SD, thickness 2.0mm, width 2000mm, colour (.....), as manufactured by Altro. All flooring to be hot welded and laid according to the manufacturer's instructions with recommended adhesives and sealants.



[samples@altro.com](mailto:samples@altro.com)

NBS model specification is available for downloading on [www.altro.com](http://www.altro.com) or telephone 01462 707600. Prior to specification please ensure you are referring to the most recent sample card.

To obtain individual samples use the SampleExpress service.

Please quote the product range and product name/number. Larger samples are also available but may take a few days.

\*For wet areas where bare-foot slip resistance is required such as shower and drying off areas, swimming pool and whirlpool surrounds and their changing rooms we recommend the use of Altro Marine T20.

\*\*Please consult Altro Technical Services.

our promise to deliver



the highest quality products & services



no.1 in independent field trials



EN14041  
0120  
GB06/72664

Manufactured by:  
Altro Ltd. Works Road  
Letchworth Garden City  
SG6 1NW  
United Kingdom



Castor chair continuous use EN 425



Water lightness EN 13553



Electrical behaviour Body voltage EN 1815



Classification Class 34 Commercial very heavy EN 685



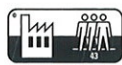
Resistance to Chemicals EN 423



Slip Resistance EN 13893



Electrical Behaviour Vertical Resistance EN1081



Classification Class 43 Industrial Heavy EN 685



Reaction to fire EN 13501-1



Enhanced Slip EN 13845

EN13845



Altro Limited, Works Road, Letchworth Garden City, Hertfordshire SG6 1NW, Tel: 01462 707600 Fax: 01462 707515 e-mail: [enquiries@altro.com](mailto:enquiries@altro.com)  
Altro, Altro Walkway, AltroGloss, AltroClean and SampleExpress are trademarks of Altro Limited. web: [www.altro.com](http://www.altro.com)

Also available:

- Resin Systems • Smooth Flooring • Rubber Flooring • Sports Flooring
- Ceiling Systems • Wall Cladding • Wall Coatings • Hygienic Doorsets